

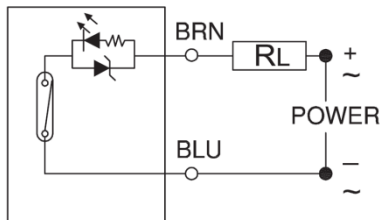
## EV Position Switches

### SPECIFICATIONS:

#### Contacts:

Single Pole, Double Throw, Normally Open

#### Wiring Diagram:



#### Wire Specifications:

- Ø2.8mm conductors
- 2 Conductor cable, brown and blue insulation
- Polyurethane insulation

### SWITCH INDICATION:

#### Single Switch:

A single switch on the bonnet uses a magnetic material connected to the plunger to indicate whether the valve is open and not open or closed and not closed. For example, a switch that indicates that the valve is closed will light up when the valve is closed. When the valve is open, the light will turn off. This would not necessarily indicate that the valve is fully open, just that it is not closed.

#### Double Switch:

The double switch option has two switches that use the magnet to provide indication for both open and closed positions.

#### Indication:

Red LED when switch is closed

#### Operating Parameters:

Operating Voltage: 5-120V AC/DC  
 Switching Current: 50mA max  
 Contact Rating: 6W max  
 Voltage Drop: 3.0 V max

#### Temperature Range:

-10 to 70°C (+14 to 158°F)

#### Enclosure Classification:

IEC 529 IP 67 (NEMA 6)

